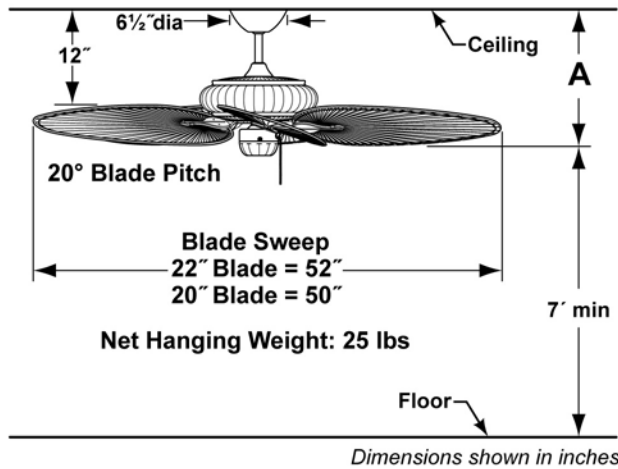
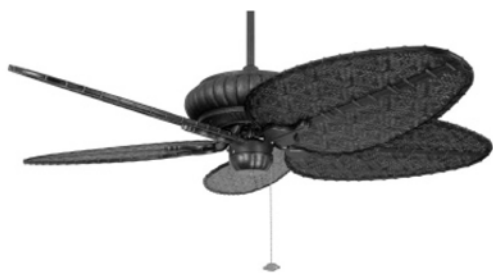


Wet Location Ceiling Fan



Distance from Ceiling to Edge of Blade	A
Fan w/6" downrod	15"
Fan w/12" downrod	21"
Fan w/18" downrod	27"
Fan w/24" downrod	33"
Fan w/36" downrod	45"
Fan w/48" downrod	57"
Fan w/60" downrod	69"
Fan w/72" downrod	81"

INSTALLATION REQUIREMENTS:

Ceiling fan attaches to electrical junction box securely anchored and capable of withstanding a load of at least 50 lbs.

ELECTRICAL REQUIREMENTS:

Ceiling fan requires a grounded electrical supply line of 120 volts AC, 60 Hz, 15 amp circuit.

FAN SPEEDS:

3-speed pull-chain with reversing switch (on the motor). 1st Pull-High – 155 rpm; 2nd Pull-Med – 95 rpm; 3rd Pull-Low – 65 rpm (with BPW blades)

BLADE OPTIONS:

Wet-Location (Plastic - BP, BPD & BPW Series) Palm, Bamboo, and Wood blades are available (sold separately in sets of 5). See catalog or visit our website, www.fanimation.com for more information.

LIGHTING OPTIONS:

Optional lighting fitters and light kits are available, including a variety of four-light fixtures with a maximum of 240 watts. Some are water-sealed and UL wet location approved.

DOWN ROD OPTIONS:

The Belleria® fan comes with a standard 6" wet-location down rod. Optional wet-location down rods are available in 12", 18", 24", 36", 48", 60", and 72". The Belleria® fan can be mounted on a sloped ceiling up to 30°. Most sloped ceiling installations require a down rod longer than the standard 6" down rod. Optional sloped ceiling ball kits (SCB52) are available for up to 52°. Call tech support for more information.

DAMP / WET LOCATION:

Fan rated for both Damp & Wet Location usage.