

## Installation Instruction

This bathroom fixture has been carefully engineered to provide a long, trouble-free service life under normal usage. It has been factory tested and is ready for installation.

### Leg Tub Faucet

1. Insert faucet (A) through the two holes inside of the leg tub, screw the locknuts (1) onto the bottom of the thread pipes and tighten.
2. Place the water supply nut (3) and washer (2) onto each supply tube, insert supply tubes into inlet shanks and wrench tighten water supply nut.

### Shower Enclosure

1. Use shower enclosure connector (11) and shower riser connector (10) to connect two piece tube (8) to become rectangular frame.
2. Use set screws (13) to connect 36" ceiling brace (19) to escutcheon (14) and 12" wall brace (15) to escutcheon (14).
3. Screw the 36" ceiling brace (19) with escutcheon (14) on the shower enclosure connector (11) (upward). Attach the escutcheon (14) to the ceiling with a screw.
4. Screw the 12" wall brace (15) with escutcheon (14) on the shower riser connector (10) (side). Attach the escutcheon (14) to the wall with screws.

### Shower Riser

1. Insert the tube (9) through the hole on the top of the shower riser connector.
2. Use coupling connector (7) to connect the tube (6) and (9).
3. Attach shower head (B) to shower arm on tube (9).

### Instructions for diagram of riser nut and cone washer

1. Make sure that you have the rubber cone (4) narrow end down.
2. Put the riser nut (5) on the riser pipe (6) and then put the rubber cone (4) on. Push the rubber cone up about 3/4" onto the pipe. The narrow end should point down.
3. Insert the riser pipe into the faucet. The riser pipe should remain vertical and seated into the faucet.
4. Push the rubber cone (4) down and then push the riser nut (5) down.
5. Continue to hold the riser pipe (6) vertical while tightening the riser nut (5) one turn.
6. Attach the wall support (15) and position the riser pipe (6) in the correct position.
7. Put a small amount of down pressure on the riser pipe (6) while tightening the riser nut (5) the rest of the way.

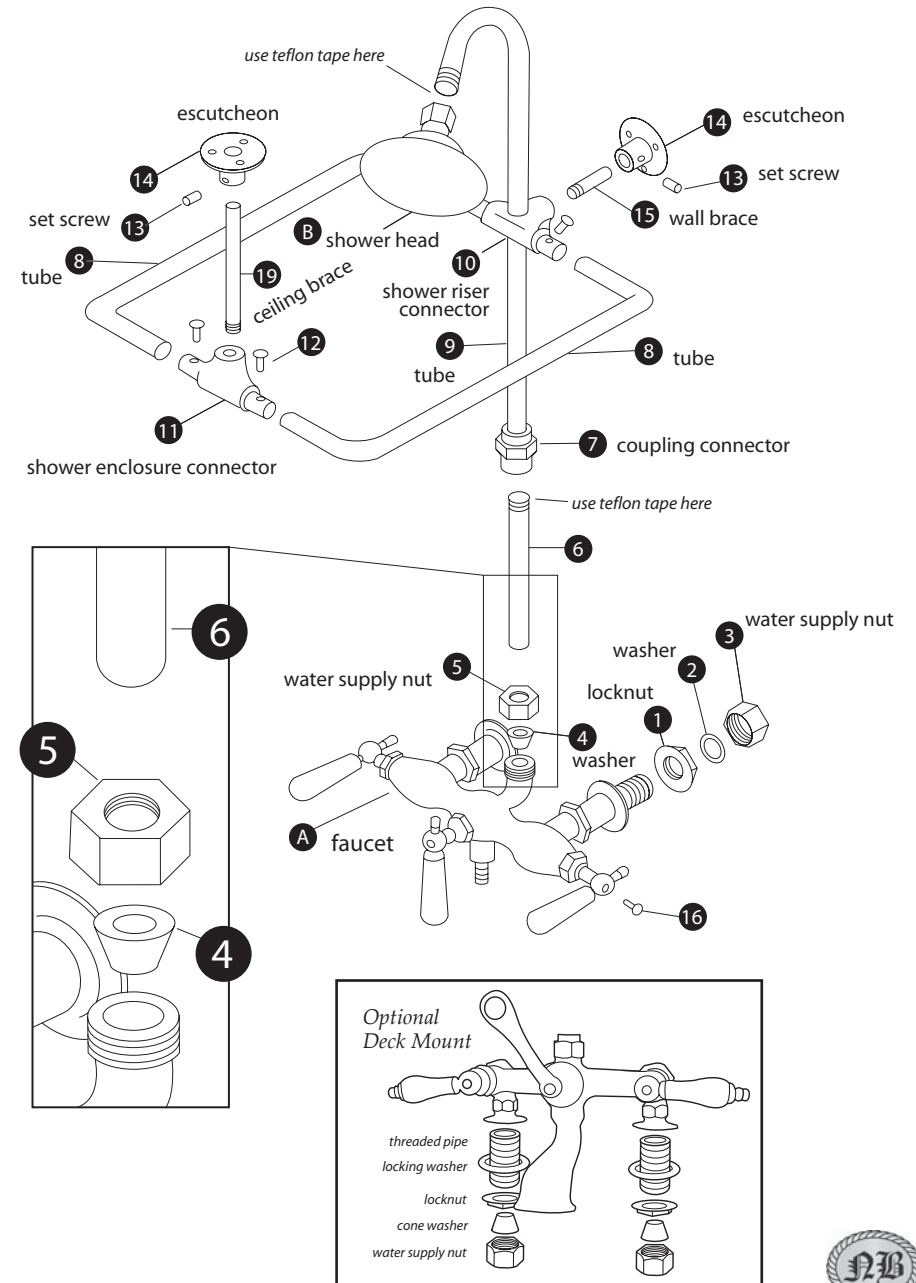
*Note: Some tub walls have a vertical slant which can be compensated for by pulling the riser pipe toward the center of the tub before tightening the riser nut. For those tubs that have walls with too large of a slant, we offer Angled Straight Faucet Shanks: <http://www.clawfootssupply.com/product1222>*

## How to Care for Your Bathroom Fixture

We suggest the following minimum maintenance for maximum enjoyment and use of your fixtures: All brass parts have been carefully finished before leaving the factory. After each use wipe gently with a damp cloth and blot dry with a soft towel. Use only water to clean your faucet. Never use acids, harsh abrasives, or detergents.

## Solid Brass Leg Shower Tub Enclosure Set

— Installation Guide —





### Manufacturer's Warranty

All items are warranted to be free of manufacturing and mechanical defects for a period of 5 years from date of purchase, when properly installed by a qualified, licensed plumber. This warranty covers replacement of defective parts, not of complete product, unless deemed necessary by a customer service representative. The warranty does not extend to labor charges when repair or replacement of the item is needed.

Thank you for purchasing a quality Nottingham Brass faucet.

We would like to inform you of an important step in the process of installing your new faucet. After attaching the faucet to the tub or sink and reconnecting the water supply lines, it is very important that you move both the hot and cold handles to the "OPEN" position before turning on the water supply valves. After turning on the water supply valves, please allow the water to flow for a minute before shutting off the hot and cold handles. This will allow sediment in the water system to pass through the faucet and not lodge in the ceramic disc cartridges.

